

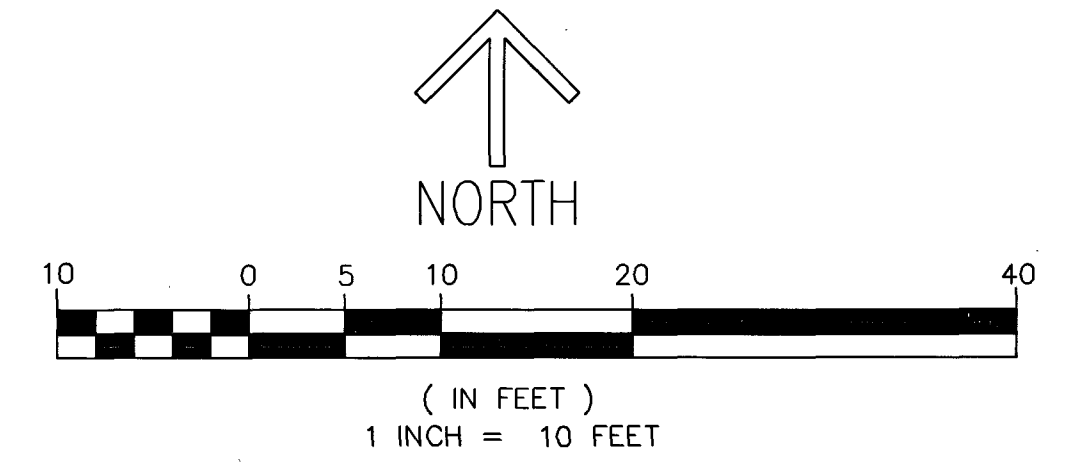
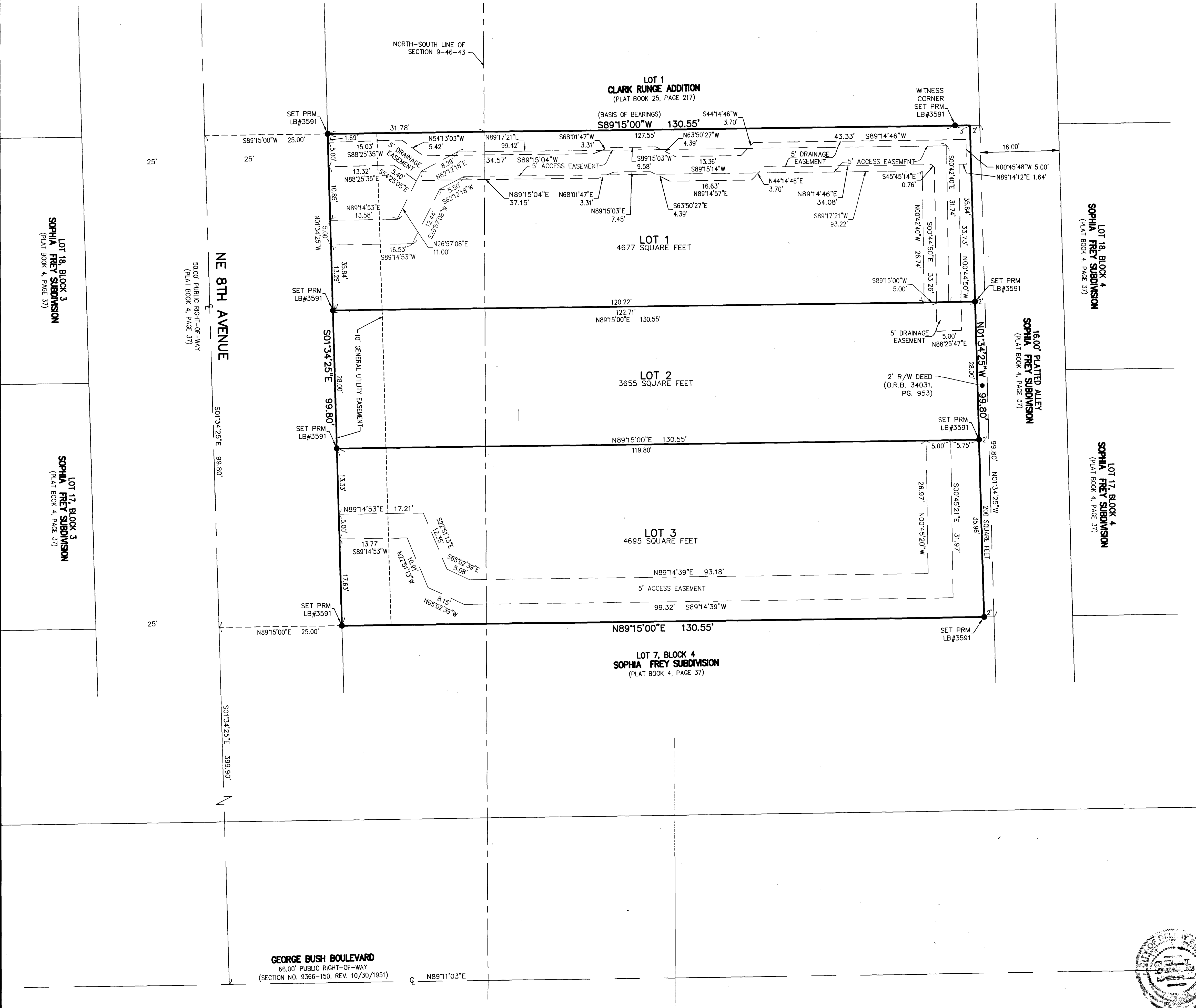
THIS INSTRUMENT PREPARED BY  
DAVID P. LINDLEY  
OF  
**CAULFIELD & WHEELER, INC.**  
SURVEYORS — ENGINEERS — PLANNERS  
7900 GLADES ROAD, SUITE 100  
BOCA RATON, FLORIDA 33434 — (561)392-1991  
CERTIFICATE OF AUTHORIZATION NO. LB3591

# STAMM 917 NE 8<sup>TH</sup> AVENUE

BEING A REPLAT OF LOTS 8 AND 9, BLOCK 4, SOPHIA FREY SUBDIVISION,  
RECORDED IN PLAT BOOK 4, PAGE 37, OF THE PUBLIC RECORDS OF PALM BEACH COUNTY, FLORIDA,  
SAID LANDS SITUATE IN THE CITY OF DELRAY BEACH, PALM BEACH COUNTY, FLORIDA,  
LYING IN SECTION 9, TOWNSHIP 46 SOUTH, RANGE 43 EAST, CITY OF DELRAY BEACH, PALM BEACH COUNTY, FLORIDA.

# 184

SHEET 2 OF 2



"NOTICE" THIS PLAT, AS RECORDED IN ITS GRAPHIC FORM, IS THE OFFICIAL DEPICTION OF THE SUBDIVIDED LANDS DESCRIBED HEREIN AND WILL IN NO CIRCUMSTANCES BE SUPPLANTED IN AUTHORITY BY ANY OTHER GRAPHIC OR DIGITAL FORM OF THE PLAT. THERE MAY BE ADDITIONAL RESTRICTIONS THAT ARE NOT RECORDED ON THIS PLAT THAT MAY BE FOUND IN THE PUBLIC RECORDS OF PALM BEACH COUNTY.

### TABULAR DATA

NAME	SQUARE FEET	ACRES
LOT 1	4,677	0.1074
LOT 2	3,655	0.0839
LOT 3	4,695	0.1078
<b>TOTAL</b>	<b>13,027</b>	<b>0.2991</b>

### SURVEY NOTES:

- IN THOSE CASES WHERE EASEMENTS OF DIFFERENT TYPES CROSS OR OTHERWISE COINCIDE, DRAINAGE EASEMENTS SHALL HAVE FIRST PRIORITY, UTILITY EASEMENTS SHALL HAVE SECOND PRIORITY, ACCESS EASEMENTS SHALL HAVE THIRD PRIORITY, AND ALL OTHER EASEMENTS SHALL BE SUBORDINATE TO THESE WITH THEIR PRIORITIES BEING DETERMINED BY USE RIGHTS GRANTED.
- BUILDING SETBACK LINES SHALL BE AS REQUIRED BY CURRENT DELRAY BEACH CITY ZONING REGULATIONS.
- THERE SHALL BE NO BUILDINGS OR ANY KIND OF CONSTRUCTION PLACED ON WATER, SEWER OR DRAINAGE EASEMENTS. NO STRUCTURES SHALL BE PLACED WITHIN A HORIZONTAL DISTANCE OF 10 FEET FROM ANY EXISTING OR PROPOSED CITY OF DELRAY BEACH MAINTAINED WATER, SEWER OR DRAINAGE FACILITIES. CONSTRUCTION OR LANDSCAPING UPON MAINTENANCE OR MAINTENANCE ACCESS EASEMENTS MUST BE IN CONFORMANCE WITH ALL BUILDING AND ZONING CODES AND/OR ORDINANCES OF THE CITY OF DELRAY BEACH.
- THERE MAY BE ADDITIONAL RESTRICTIONS THAT ARE NOT RECORDED ON THIS PLAT THAT MAY BE FOUND IN THE PUBLIC RECORDS OF PALM BEACH COUNTY, FLORIDA.
- THE CITY OF DELRAY BEACH IS HEREBY GRANTED THE RIGHT OF ACCESS FOR EMERGENCY AND MAINTENANCE PURPOSES.
- ALL RECORDING REFERENCES ARE RECORDED IN THE PUBLIC RECORDS OF PALM BEACH COUNTY, FLORIDA.
- BEARINGS SHOWN HEREON ARE RELATIVE TO A GRID BEARING OF N89°15'00"E ALONG THE NORTH LOT LINE OF LOT 9, BLOCK 4, PLAT BOOK 4, PAGE 37, RELATIVE TO THE FLORIDA STATE PLANE COORDINATE SYSTEM, EAST ZONE, NORTH AMERICAN DATUM OF 1983 (1990 ADJUSTMENT).
- ALL DISTANCES SHOWN HEREON ARE GROUND.

### LEGEND/ABBREVIATIONS:

- G.U. OR G.U.E — GENERAL UTILITY EASEMENT
- LB — LICENSED BUSINESS
- ⊕ — CENTERLINE
- 9-46-43 — SECTION 9, TOWNSHIP 46 SOUTH, RANGE 43 EAST
- PRM ● — DENOTES SET 5/8" IRON ROD AND CAP  
STAMPED PRM LB#3591
- SND ● — DENOTES SET NAIL AND DISK  
STAMPED "C&W PRM LB3591"



GEORGE BUSH BOULEVARD  
66.00' PUBLIC RIGHT-OF-WAY  
(SECTION NO. 9366-150, REV. 10/30/1991)